

# Lexmark XS955dhe color MFP



Digs deep. Does more. Dazzles with color.



Color



Touch  
Screen



Copy



Scan



Fax



Solutions



11x17



Up to  
55 ppm



Duplex



Network

**LEXMARK**  
TM



## Why Lexmark?

Founded from an IBM heritage in Lexington, Kentucky, in 1991, Lexmark is one of the few American companies to own, develop and market inkjet, laser and color laser print technologies. Lexmark is poised to deliver on its promise to produce quality, dependable products well into the future.

## Lexmark XS955dhe Family highlights



### Make a lasting impression with award-winning color.

The documents you print define an important image – yours. That's why Lexmark color MFPs help businesses be more productive and stand out with vibrant color. With the ability to print professional quality color in-house, you can add instant impact and save costs by virtually eliminating the need to outsource print jobs. Lexmark also offers a host of color-access and control tools to manage cost.



**Eco-responsible.** Printing responsibly means everyone wins – your business, your budget and the environment. Lexmark's award-winning products are designed for ease of use, high quality output and reliable performance, with innovative capabilities that help you minimize the number of cartridges you use over the life of the printer and conserve paper and energy. Our goal is to design, package and deliver innovative products and solutions in an environmentally responsible manner.

The Lexmark Cartridge Collection Program is active around the world providing a variety of methods for free returns of your empties to Lexmark or our collection partners. Our goal: Make it easy to do the right thing.



### Environmental protection is a shared responsibility.

Through our work with industry groups, Lexmark helps guide the formation of standards and guiding principles for environmental sustainability.

#### Our memberships include:

- AeA Europe
- American National Standards Institute (ANSI)
- Ecma International
- Electronics Industry Citizenship Coalition (EICC)
- European Information & Communications Technology Industry Association (EICTA)
- Information Technology Industry Council (ITI)
- ITI Environmental Leadership Council



## Lexmark XS955dhe overview



**Affordable Color Output.** The Lexmark XS955dhe delivers high quality 11x17 color multifunction performance in an affordable, compact design. Enjoy the benefits of vibrant, professional-quality output on a wide variety of media, allowing you to do more color printing in-house.

- PANTONE® calibration for consistent color tones
- Named Color Replacement for easy color matching
- Supports banner media up to 47.24-inches long
- Lexmark Color Care Technology to manage color usage and control costs



**Easy and Intuitive.** The Lexmark XS955dhe is designed for easy operation and maintenance.

- Extra large, easy to navigate 10.2-inch color touch screen provides audible and tactile feedback to make completing tasks intuitive
- Print and scan preview features help you select documents or specific pages within a document
- Ability to change settings, such as duplex, at the device
- Robust connectivity makes it easy to integrate into almost any network environment
- Sleep Button and Hibernate Mode to reduce energy costs
- Device management software available



**Business Productivity.** The Lexmark XS955dhe combines high-performance printing, copying, scanning and faxing with time-saving solution applications designed to boost your productivity.

- Print and copy speeds as fast as 55 ppm
- Advanced copy functions include the ability to interrupt long print runs to make a quick copy, and proof the first copy set before completing your copy job
- Scan to multiple destinations, including scan to email, scan to FTP, scan to fax, scan to network, and more
- Preloaded applications to drive greater efficiency, and Lexmark Embedded Solutions Framework to further extend the capabilities of the device

## Save time and money through solutions

Reduce unnecessary printing and simplify work processes through Lexmark solutions. The XS955dhe features the Lexmark Embedded Solutions Framework (eSF), our platform that enables you to add a wide range of software applications directly onto the device. Solutions are designed with your productivity in mind, helping you streamline—or even eliminate—paper intensive business processes.



## Lexmark XS955dhe solutions

**The right touch.** The Lexmark e-Task color touch screen is a key access point to your device. The extra large customizable 10.2-inch interface gives you the ability to preview thumbnails of documents prior to printing, as well as change print jobs at the device. You can even view, select and print specific pages within a document directly from the touch screen. The easy-to-use, intuitive navigation provides fast access to the functions and shortcuts.



### The following are a few of the Lexmark solutions available through your authorized Lexmark Business Solutions Dealers:



#### Showroom

Display a customizable, scrolling slideshow on the color touch screen to promote your business or products, or to communicate important messages to your customers or employees.



#### Card Copy

Save time and effort in copying identification cards, licenses and insurance cards by automatically scanning, enlarging and copying both sides of a two-sided card onto one side of a sheet of paper.



#### Background and Idle Screen

Change the touch screen background to your corporate logo, custom images, a unique message or select from preloaded screens.

### The following are a few solutions that come preloaded on the XS955dhe:



#### Forms and Favorites

Eliminate waste and inefficiencies associated with preprinted forms. Store frequently printed forms, marketing materials or other documents online, then print them on demand.



#### Scan to Network

Scan a hardcopy document and route the image to one of 30 predefined personal or public shared network folders.



## Lexmark XS955dhe vertical solutions



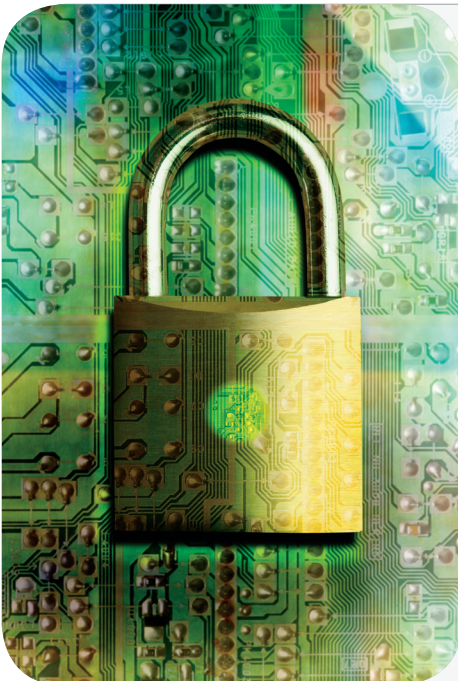
**Legal.** Bundle of applications available to help firms improve common paper workflow processes. Consists of Legal Forms, Scan to Court, Scan to Case Manager and Background and Idle Screen.

**Education.** Solutions integrated into the educational space where classroom testing and paperwork tasks can be performed with just one touch. Consists of Scan to Classroom, Classroom Forms, Print Test, Grade Test\* and Background and Idle Screen.

**Healthcare.** Bundle of applications for the healthcare industry designed to save clinicians time and improve patient care by streamlining common healthcare workflow processes. Consists of Scan to EMR, Physician Order Routing, Clinical Forms, Card Copy and Background and Idle Screen.

Contact your Lexmark Business Solutions Dealer for additional vertical solutions.

\*Optional software available. Licensing fees apply.



### Lexmark's standard security features for your network, data and devices.

Output security has never been more important to businesses of all sizes. Lexmark's security functions include device management, device hardening and device operation. Strong multilayered security is built-in.

**Device management** tools include administrative access and passwords, HTTPS, SNMPv3, IP security (IPSec) and 802.1x support to remotely monitor and manage device usage.

**Device hardening** includes port filtering, TCP connection filtering, hard drive encryption, hard disk wiping, and digitally signed firmware updates which enhances the security of the device's network interface.

**Device operation** utilizes user authentication, address book lookup via LDAP over SSL and device lockout for protection of user information.

#### Lexmark has shown its strength and leadership with respect to security by:

- Forming and chairing the group that created the IEEE 2600 standards for security on hardcopy devices.
- Becoming the first hardcopy device manufacturer to take a holistic approach with the National Information Assurance Partnership (NIAP) Common Criteria evaluation.

## Lexmark XS955dhe key features



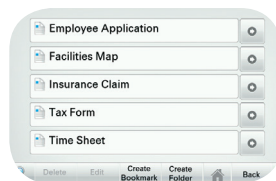
Lexmark XS955dhe color MFP with optional Booklet Finisher and 2,000-Sheet High Capacity Feeder.

## Features to optimize your work



### 1) Intuitive color touch screen

The extra large 10.2-inch color touch screen allows you to operate your MFP with ease through intuitive navigation and easy access to workflow solutions and shortcuts.



### 2) Lexmark solutions

Reduce unnecessary printing and simplify work processes through solutions applications preloaded on your device. Choose additional Lexmark solutions to fit your unique workflow needs.



### 3) Direct USB

The front USB port allows for convenient walk-up preview, printing and scanning, and is compatible with many printable image file formats.



### 4) Flexible input capacity

Choose the configuration that best fits your needs, up to a maximum of 5,140 sheets.



### 5) Exceptional media handling

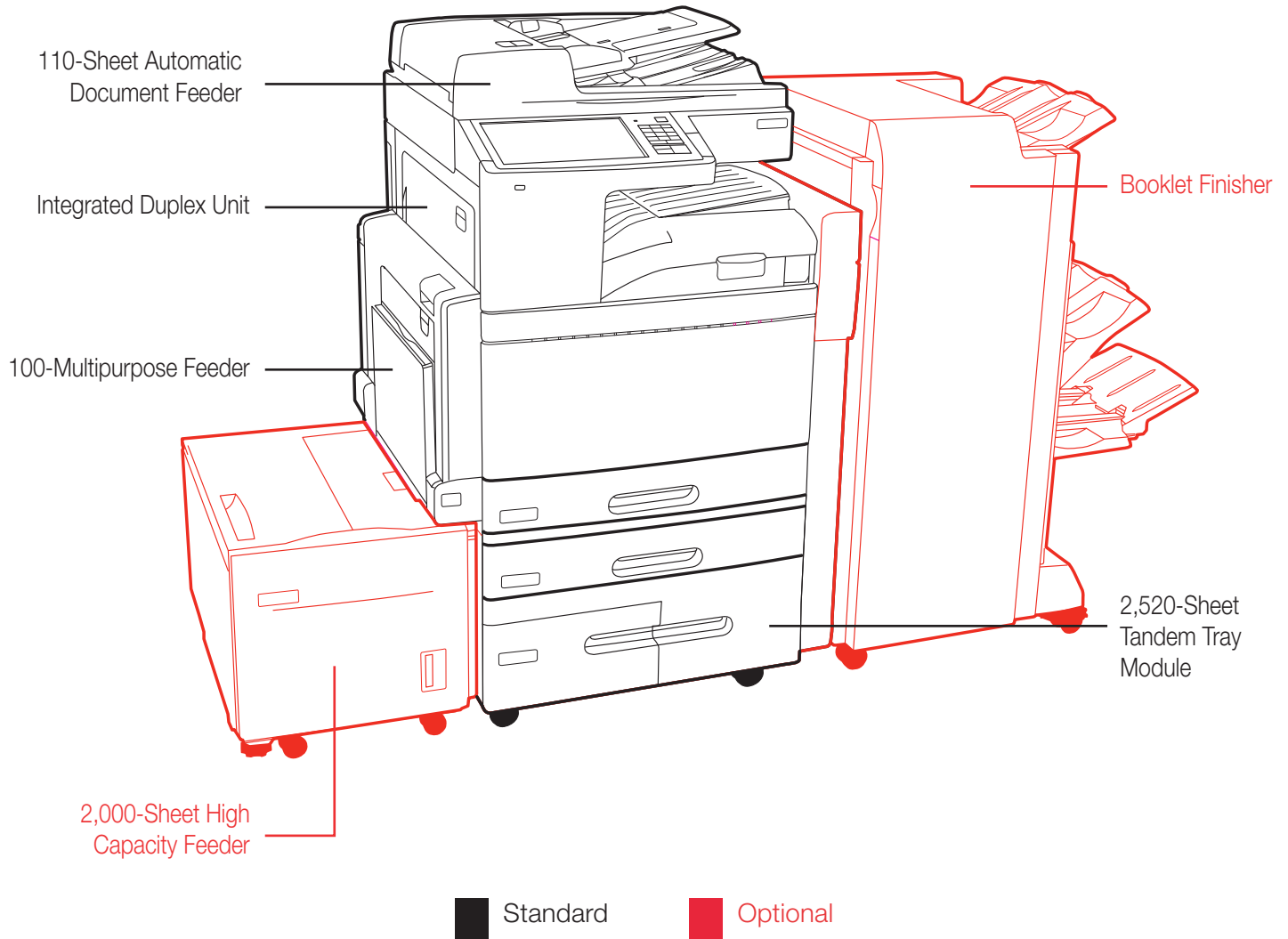
Ultra-reliable paper feeding lets you load up to six different types of media; supports banner media up to 47.24-inches long and weights up to 110 lb. cover weight.



### 6) Advanced finishing options

Easily create professional output in-house with flexible finishing options, including multi-position stapling, hole punch, expanded output stacking, and booklet capability.

# Lexmark XS955dhe ordering information



## Compatible on the XS955dhe color MFP

Part #	Product
22Z0022	Lexmark XS955dhe MFP

Part #	Lexmark XS955dhe Supplies
22Z0008	XS955dhe Black High Yield Toner Cartridge
22Z0009	XS955dhe Cyan High Yield Toner Cartridge
22Z0010	XS955dhe Magenta High Yield Toner Cartridge
22Z0011	XS955dhe Yellow High Yield Toner Cartridge

Part #	Lexmark XS955dhe Options and Accessories
22Z0015	Lexmark C950, X950 2,000-Sheet High Capacity Feeder (A4)
22Z0016	Lexmark C950, X950 Standard Finisher (3-Hole)
22Z0017	Lexmark C950, X950 Booklet Finisher (3-Hole)

# Lexmark XS955dhe product specifications



Lexmark XS955dhe

<b>Speeds</b>	
<b>Black</b>	Copy, Print, Scan up to 55 ppm Letter
<b>Color</b>	Copy, Print, Scan up to 50 ppm Letter
<b>Paper Handling</b>	
<b>Paper Capacity</b>	Standard Input: 3,140; Standard Output: 500 Maximum Input: 5,140 (520 + 2,520 + 2,000 + 100 Bypass); Maximum Output: 3,750
<b>Media Information</b>	Types: Plain Paper, Paper Labels, Card Stock, Transparencies, Envelopes Size: Letter, Legal, Ledger, Executive, Folio, Statement, Universal, A3, A4, A5, JIS-B4, JISB5, Envelopes (7-3/4, 10, DL C5), Weight: Plain Paper: 16 to 68 lb. bond (60 to 256 g/m <sup>2</sup> )
<b>Bypass Tray</b>	Weights up to 110 lb. cover weight
<b>ADF Capacity</b>	Up to 110 Sheets
<b>Copy</b>	
	Touch Screen: 10.2-inch Color, Customizable Memory (Min/Max): 2GB/2GB Time to First Copy Out: As Fast as 6.4 Seconds Copy Resolution: 600 x 600 dpi Copy Features: Reduce/Enlarge (25-400%), Paper Saver (2-up and 4-up), Collation, Darkness Adjustment, Original Size to Output Size Selection, Copy Select 1-999, Date/Time Stamp, Message Overlay, Priority Copy (Job Interrupt), Copy Countdown
<b>Print</b>	
	Time to First Page: As Fast as 5.0 Seconds Resolution: Up to 1200 x 1200 dpi; 2400 Image Quality (default) Processor: 1.2 GHz; Hard Disk included Connectivity (Standard): One Internal Card Slot, Gigabit Ethernet (10/100/1000), Hi-Speed USB Port Compatible with USB 2.0 Specification (Type A), Front Hi-Speed USB Port Compatible with USB 2.0 Specification (Type A), Rear Hi-Speed USB Port Compatible with USB 2.0 Specification (Type A) Connectivity (Optional): Parallel, Serial, Wireless, Fiber
<b>Scan</b>	
	Scan Speed: Up to 70 ipm Black (letter); Up to 52 ipm Color (letter) Scan Features: Resolution: up to 600 x 600 dpi; ADF Scan: Duplexing ADF Scan Destinations: USB Thumb Drive, E-mail, FTP, LDSS, Network or USB Connected Computer, Windows Network Folder File Formats: TIFF, JPG, PDF, XPS, Secure PDF
<b>Fax</b>	
	Resolution: 200 x 100 dpi, 200 x 200 dpi, 300 x 300 dpi, 600 x 600 dpi Fax Features: Fax Redirect, Group Fax, Manual Fax, Fax from PC, Up to 512-Character Shortcuts, Fax Preservation, LDAP Look-up, Caller ID, Speed Dials, Block Junk Faxes, Broadcast, Fax Shortcuts, Fax Forwarding
<b>Supplies Yield</b>	
	Ships with 16,000-Page Black Print Cartridge and 11,000-Page CMY Print Cartridges Aftermarket 32,000-Page High Yield Black Toner Cartridge; 22,000-Page High Yield CMY Toner Cartridges* *Based on approximately 5% print coverage per color. Yields may vary based on actual customer usage.
<b>Recommended Monthly Volume</b>	
	5,000 - 33,000 Pages/Month
Contact your dealer about workflow solutions.	

## Recommended Monthly Page Volume

-Recommended Monthly Page Volume- is a range of pages that helps customers evaluate Lexmark's product offerings based on the average number of pages customers plan to print on the device each month. Lexmark recommends that the number of pages per month be within the stated range for optimum device performance, based on factors including: supplies replacement intervals, paper loading intervals, speed, and typical customer usage.

## Maximum Monthly Duty Cycle

-Maximum Monthly Duty Cycle- is defined as the maximum number of pages a device could deliver in a month using a multishift operation. This metric provides a comparison of robustness in relation to other Lexmark printers and MFPS.



## Trademarks

Lexmark and Lexmark with the diamond design are trademarks of Lexmark International, Inc., registered in the United States and/or other countries. All other trademarks are the property of their respective owners. PCL is a registered trademark of Hewlett-Packard Company. AppleTalk, Mac and Macintosh are trademarks of Apple Computer, Inc., registered in the United States and other countries. MarkNet and MarkVision are trademarks of Lexmark International, Inc., registered in the United States and/or other countries. ENERGY STAR® is a U.S. registered mark. Microsoft, Windows, the Windows logo, Windows Vista, and the Windows Vista logo are trademarks or registered trademarks of Microsoft Corporation in the United States and/or other countries. Citrix, MetaFrame and MetaFrame XP are registered trademarks or trademarks of Citrix Systems, Inc. Information in this document is subject to change without notice. This product features Adobe® Flash® technology. For further information, visit <http://www.adobe.com/software/flash/about>.